

525

60,000

21,000,000

4,654,520 8,078,511
8,901,705 4,346,501
6,805,210 6,688,570



AV710-X4

4CH 3G-SDI Military AGX Orin IP65 Computer



- NVIDIA® Jetson AGX Orin 32GB/64GB IP65 Computer
- MIL-STD-810 Thermal, Shock, Vibration, Humidity
- Support 4CH 3G-SDI Low Latency, NVENC H.264
- Support 2x 1GbE LAN, 1x USB3.0, 1x HDMI
- IP65 Classified
- Extended Temperature -20 to +55°C
- DC-IN 12V~32V
- Ultra Small Size : 250 x 220 x 100mm (W x D x H)

Specifications

System

AI Performance	200 TOPS
CPU module	Ampere GPU + Arm Cortex-A78AE CPU + 32GB LPDDR5 + 64GB eMMC 5.1
GPU	NVIDIA Ampere architecture with 1792 NVIDIA® CUDA® cores and 56 Tensor Cores, max freq. 930MHz
CPU	8-core Arm® Cortex®-A78AE v8.2 64-bit CPU, 2MB L2 + 4MB L3, max freq. 2.2GHz
Memory	32GB 256-bit LPDDR5, 204.8 GB/s
Storage	64GB eMMC 5.1 1x PCIe x4.0 M.2 2280 M-Key up to 2TB
Expansion Slot	2x M.2 2280 M key (PCIe x4) 1x M.2 3042/3052 B key 1x M.2 2030 E key 2x UART 1x I2S 1x I2C 2x SPI 1x CAN 1x Micro SD 1x SIM

Display

Display	1x HDMI 2.0(max resolution 3840x2160)
---------	---------------------------------------

Front I/O

Power In	12V~32V DC-IN with M12 waterproof connector
X1	1x 1GbE LAN with M12 waterproof connector
X2	1x 1GbE LAN with M12 waterproof connector
X3	1x USB3.0, with M20 waterproof connector
X4	1x HDMI with M20 connector
BNC	4x Channel 3G-SDI with BNC connector

Rear I/O

GND	1x Grounding Screw
Debug Access Panel	1x Reset Button 1x Recover Button 1x USB Type-C for Debug 1x USB Type-C for Recovery 1x Reboot LED

Operating System

OS	NVIDIA Jetpack™ 5.x(5.02/5.1)
----	-------------------------------

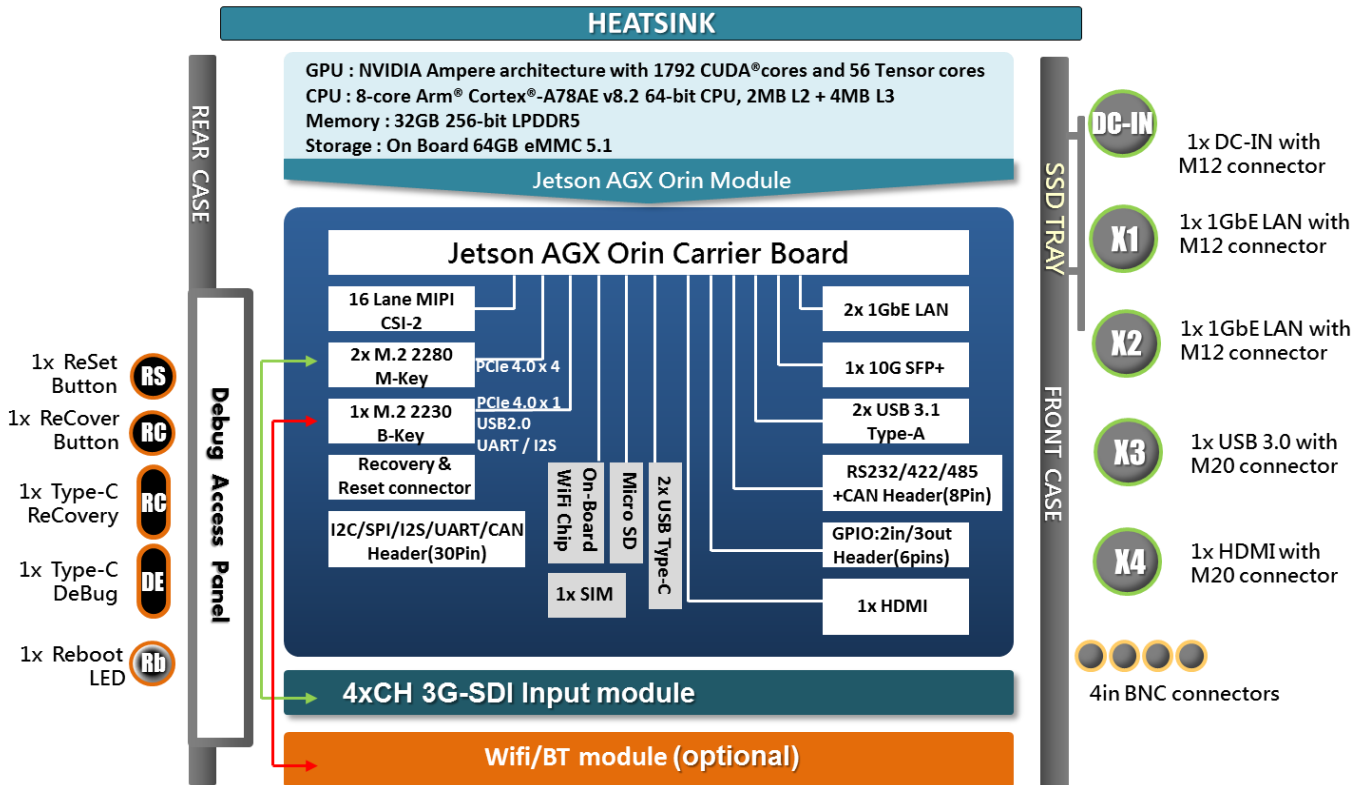
Physical

Dimension	250(W) x 220 (D) x 100 (H)mm
Weight	3.3Kg

Environmental

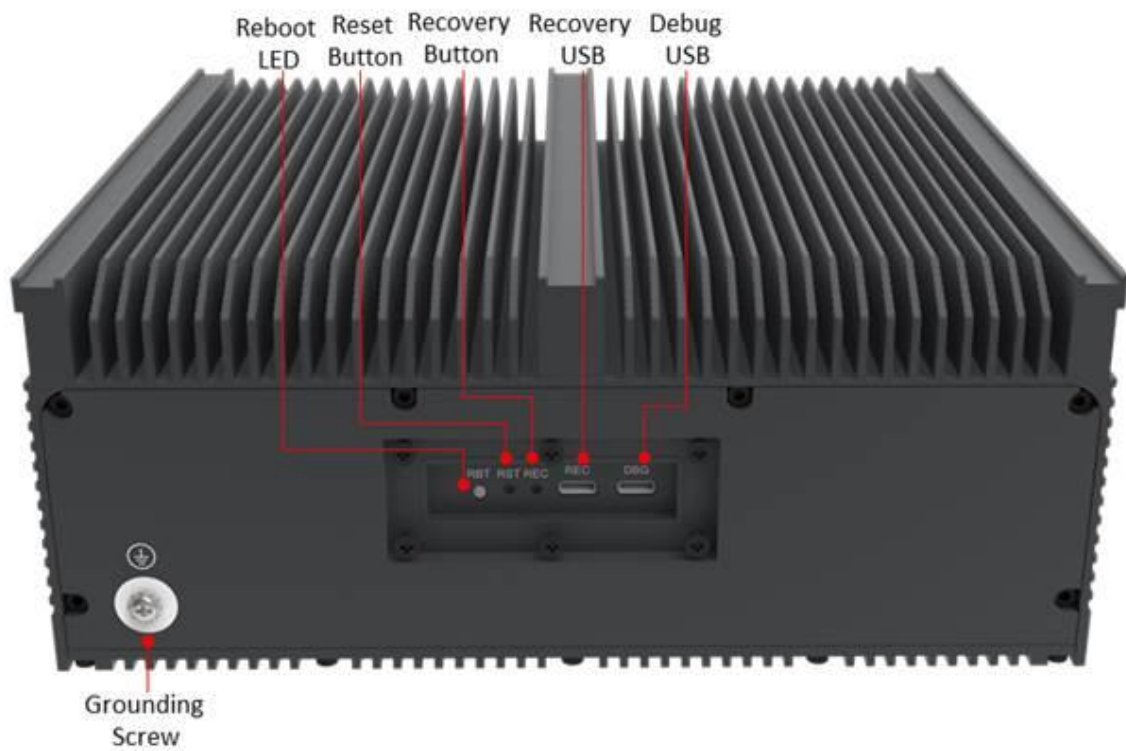
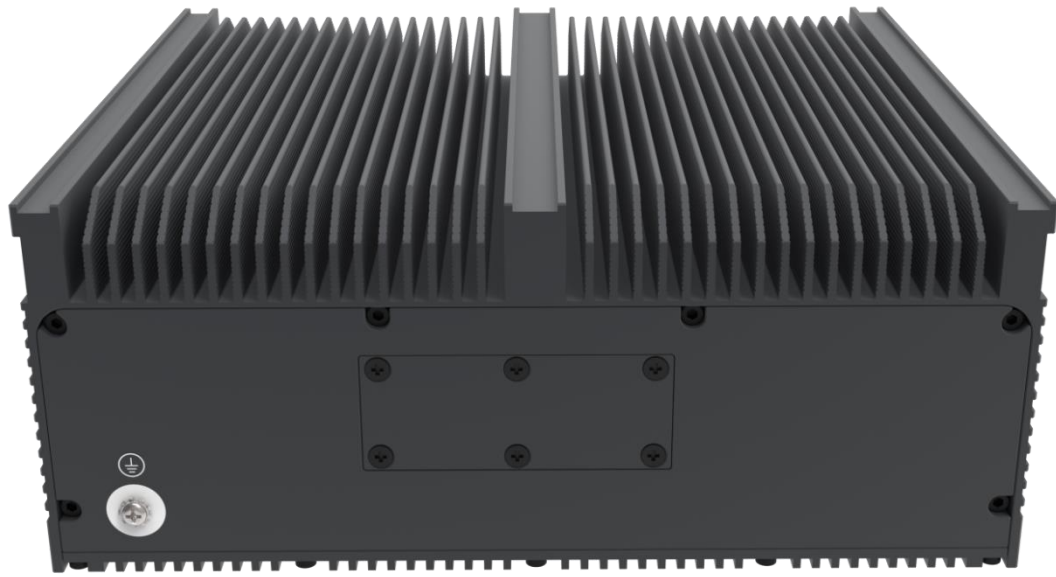
Operating Temp.	-20 to 55°C
Storage Temp.	-40 to 85°C

Block Diagram

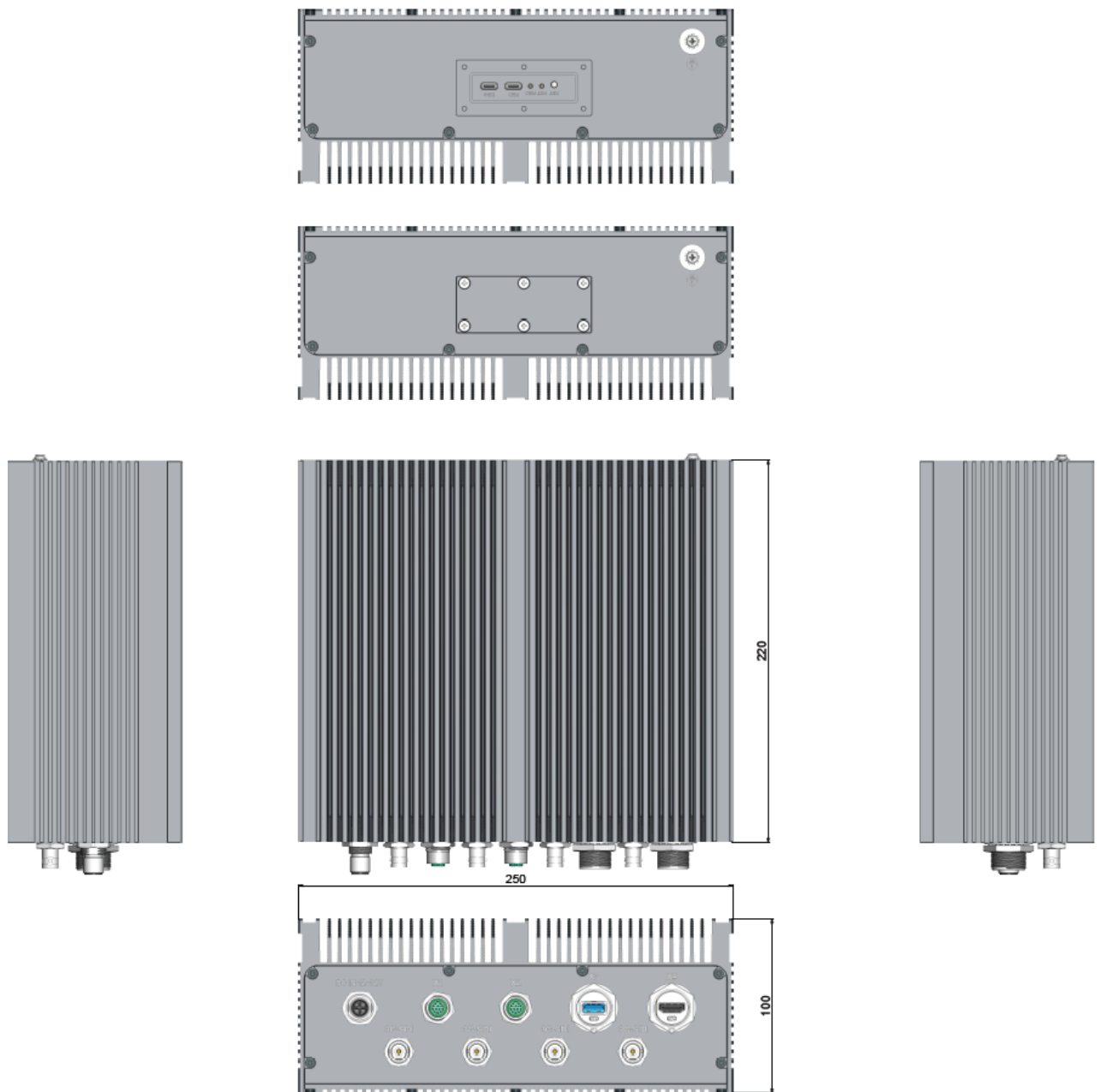


Appearance





Dimensions



Ordering Information

Model No.	AV710-X4-A	AV710-X4-B	AV710-X4-C	AV710-X4-D
Sales Name	AV710-X4-32G4S	AV710-X4-32G	AV710-X4-32G-8GM	AV710-X4-32G4S-8GM
CPU Module	NVIDIA Jetson AGX Orin 32GB	NVIDIA Jetson AGX Orin 32GB	NVIDIA Jetson AGX Orin 32GB	NVIDIA Jetson AGX Orin 32GB
Memory	32G 256bit LPDDR5x	32G 256bit LPDDR5x	32G 256bit LPDDR5x	32G 256bit LPDDR5x
Graphics	1x HDMI2.0 (3840 x 2160)	1x HDMI2.0 (3840 x 2160)	1x HDMI2.0 (3840 x 2160)	1x HDMI2.0 (3840 x 2160)
Storage	64 GB eMMC	64 GB eMMC	64 GB eMMC	64 GB eMMC
	M.2 1TB SSD	M.2 1TB SSD	M.2 1TB SSD	M.2 1TB SSD
	NA	M.2 1TB SSD	M.2 1TB SSD	NA
I/O				
Power In	12V~32V DC-IN with M12 connector	12V~32V DC-IN with M12 connector	12V~32V DC-IN with M12 connector	12V~32V DC-IN with M12 connector
X1	1x 1GbE LAN with M12 connector	1x 1GbE LAN with M12 connector	1x 1GbE LAN with M12 connector	1x 1GbE LAN with M12 connector
X2	1x 1GbE LAN with M12 connector	1x 1GbE LAN with M12 connector	1x 1GbE LAN with M12 connector	1x 1GbE LAN with M12 connector
X3	1x USB 3.0 with M20 connector	1x USB 3.0 with M20 connector	1x USB 3.0 with M20 connector	1x USB 3.0 with M20 connector
X4	1x HDMI with M20 connector	1x HDMI with M20 connector	1x HDMI with M20 connector	1x HDMI with M20 connector
3G-SDI	4x 3G-SDI	No	No	4x 3G-SDI
GMSL(2)	No	NO	4+4x GMSL	4+4x GMSL
Power Button	Option	Option	Option	Option
Dimension	250 x 220 x 100mm(WxDxH)	250 x 220 x 100mm(WxDxH)	250 x 220 x 100mm(WxDxH)	250 x 220 x 100mm(WxDxH)
Ambient Codition	-20°C ~ +55°C	-20°C ~ +55°C	-20°C ~ +55°C	-20°C ~ +55°C
OS	Linux 20.04	Linux 20.04	Linux 20.04	Linux 20.04
JetPack support	Jetpack 5.X (5.0.2 / 5.1)	Jetpack 5.X (5.0.2 / 5.1)	Jetpack 5.X (5.0.2 / 5.1)	Jetpack 5.X (5.0.2 / 5.1)

Model No.	AV710-X4-E	AV710-X4-F	AV710-X4-G	AV710-X4-H
Sales Name	AV710-X4-64G	AV710-X4-64G4S	AV710-X4-64G-8GM	AV710-X4-64G4S-8GM
CPU Module	NVIDIA Jetson AGX Orin 64GB	NVIDIA Jetson AGX Orin 64GB	NVIDIA Jetson AGX Orin 64GB	NVIDIA Jetson AGX Orin 64GB
Memory	64G 256bit LPDDR5x	64G 256bit LPDDR5x	64G 256bit LPDDR5x	64G 256bit LPDDR5x
Graphics	1x HDMI2.0 (3840 x 2160)	1x HDMI2.0 (3840 x 2160)	1x HDMI2.0 (3840 x 2160)	1x HDMI2.0 (3840 x 2160)
Storage	64 GB eMMC	64 GB eMMC	64 GB eMMC	64 GB eMMC
	M.2 2TB SSD	M.2 2TB SSD	M.2 2TB SSD	M.2 2TB SSD
	M.2 2TB SSD	NA	M.2 2TB SSD	NA
I/O				
Power In	12V~32V DC-IN with M12 connector	12V~32V DC-IN with M12 connector	12V~32V DC-IN with M12 connector	12V~32V DC-IN with M12 connector
X1	1x 1GbE LAN with M12 connector	1x 1GbE LAN with M12 connector	1x 1GbE LAN with M12 connector	1x 1GbE LAN with M12 connector
X2	1x 1GbE LAN with M12 connector	1x 1GbE LAN with M12 connector	1x 1GbE LAN with M12 connector	1x 1GbE LAN with M12 connector
X3	1x USB 3.0 with M20 connector	1x USB 3.0 with M20 connector	1x USB 3.0 with M20 connector	1x USB 3.0 with M20 connector
X4	1x HDMI with M20 connector	1x HDMI with M20 connector	1x HDMI with M20 connector	1x HDMI with M20 connector
3G-SDI	No	4x 3G-SDI	No	4x 3G-SDI
GMSL(2)	No	No	4+4x GMSL	4+4x GMSL
Power Button	Option	Option	Option	Option
Dimension	250 x 220 x 100mm(WxDxH)	250 x 220 x 100mm(WxDxH)	250 x 220 x 100mm(WxDxH)	250 x 220 x 100mm(WxDxH)
Ambient Codition	-20°C ~ +55°C	-20°C ~ +55°C	-20°C ~ +55°C	-20°C ~ +55°C
OS	Linux 20.04	Linux 20.04	Linux 20.04	Linux 20.04
JetPack support	Jetpack 5.X (5.0.2 / 5.1)	Jetpack 5.X (5.0.2 / 5.1)	Jetpack 5.X (5.0.2 / 5.1)	Jetpack 5.X (5.0.2 / 5.1)