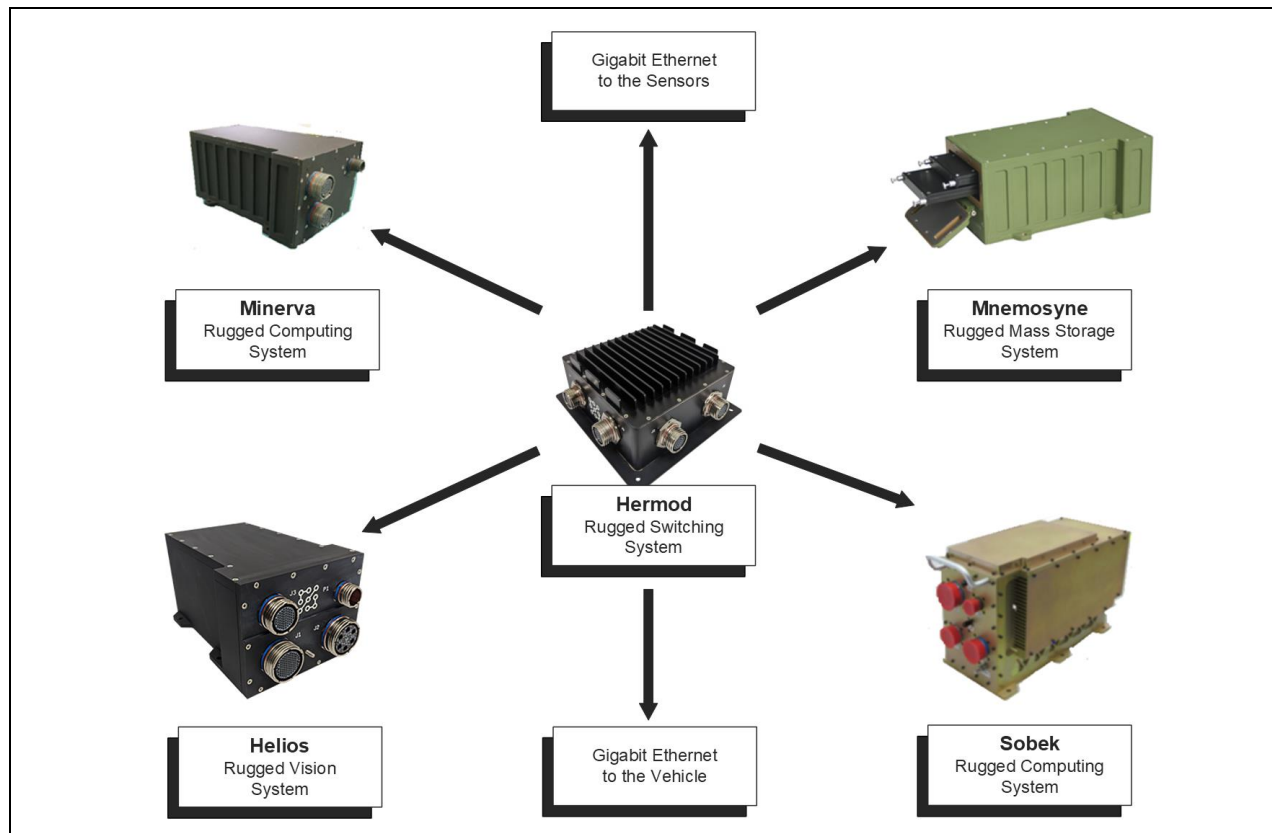


Rugged 15-port Gigabit Ethernet Switching System

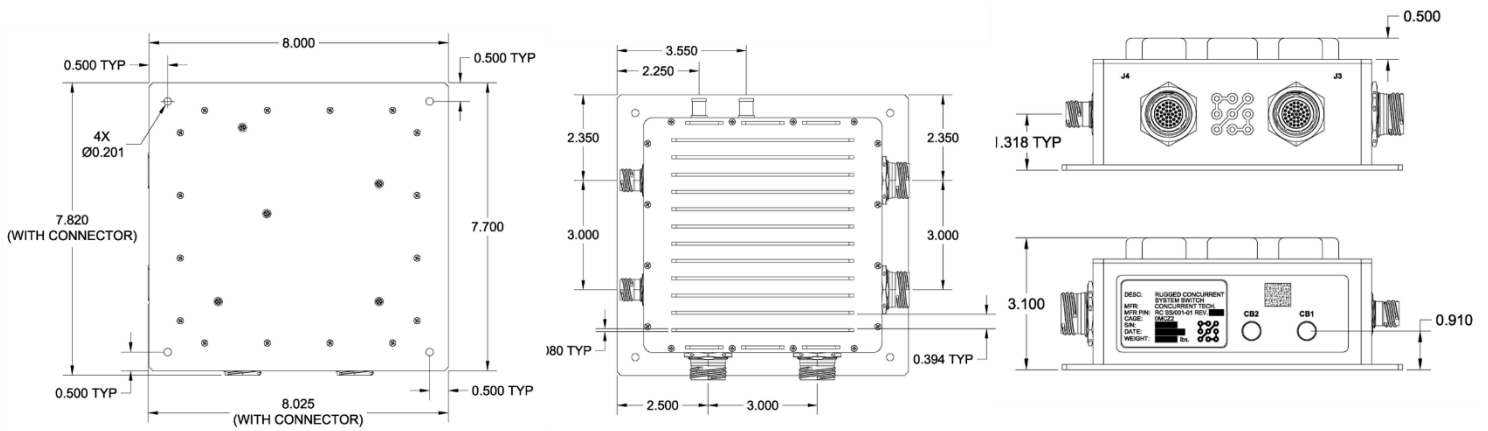
Key Features

Hermod is a rugged Commercial Off the Shelf (COTS) Gigabit Ethernet switch optimized for Size, Weight, Power and Cost (SWaP-C) harsh environment embedded computer network applications. Featuring advanced Layer 2 switching with 15 ports of non-blocking 10/100/1000 Mbps connectivity.

- Managed Layer 2
- Designed to meet MIL-STD-810/ DO-160/ MIL-STD-704/ MIL-STD-461
- Operating Temperature -40°C to +55°C
- IP67 Dust/Waterproof Aluminium Chassis
- Circular Nickel PTFE MIL-DTL-38999 Connectors
- Security
- Line Rate Switching Engine
- Quality of Service (QoS)



Specification



Designed to Meet

- MIL-STD-810F
 - Operating Temp: -40°C to +55°C, methods 501.4 and 502.4
 - Non-operating / Storage temperature: -51°C to +85°C
 - Altitude: 27,000 ft operational, 65,000 ft non-operational, method 500.4
 - Vibration: 3.09g RMS 20-2000 Hz for 1 hour in each direction of 3 axes per 514.5 category 12
 - Shock: 10g peak sawtooth of 11ms all planes and both directions per 516.4-4
 - Acceleration, ±1.2 Gs in x-axis, ±1.0 Gs in y-axis, +5.0, -2.5 Gs in z-axis for one minute
 - Humidity, 95% non-condensing, method 507.1
 - Water Proofness
 - Bench Handling Shock
- RTCA DO-160D
 - Sand and Dust, 8.8g/m³, 0.5-2.5m/s
 - Explosion Proofness
 - Fluid Susceptibility
 - Icing
- MIL-STD-461E
 - CE102 section 3.2.1
 - CS101 curve #2 @ 28V
 - CS114 Navy, Aircraft Internal
 - CS115
 - CS116
 - RE102: fixed wing internal, per RE102-3
 - RS103: Air Force, Aircraft Internal
 - Lighting induced transient susceptibility per section 3.2.1.1
 - Electrostatic Discharge

Power

- 28VDC, 17W
- OC, OV, and inrush protected
- Meets MIL-STD-704E (without 50 ms holdup)

Mechanical

- Dimensions: 7.820" L x 8.025"W x 3.1"H
- Weight: 1.7 kg (3.7 lbs)

Software Features

- Software Features can be accessed through the RS232 port, which uses a simple menu-driven interface to display the configuration and prompt for changes
- Built-In Test Responder:
 - Power-On BIT results
 - Periodic BIT results
 - Commanded BIT and results:
 - Memory tests
 - Virtual Cable Test
 - Loopback Test
- Authentication and Port Security:
 - Usernames and passwords
 - Ethernet Port Status
 - Ethernet Port Speed and Duplex
 - Ethernet Port Enable and Security
 - User Management
 - Set the IPv4 address and the IPv6 address
 - Display manufacturing data such as firmware version, serial number, assembly, revision, etc.